



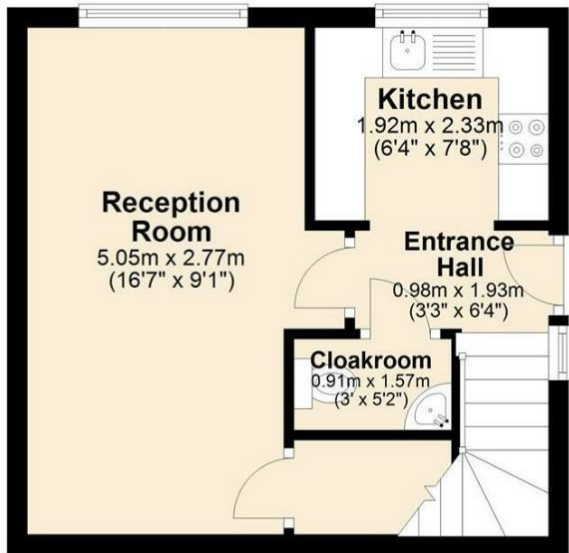
7 Calver Avenue, North Wingfield, Chesterfield, S42 5WA

Offers Around £139,950

- Modern Town House
- Reception Room
- TWO Bedroom
- Ideal for FTB's
- Popular Location
- Kitchen
- Bathroom
- Well Presented
- Cloakroom / WC
- Garden & Parking

Ground Floor

Approx. 26.3 sq. metres (282.6 sq. feet)

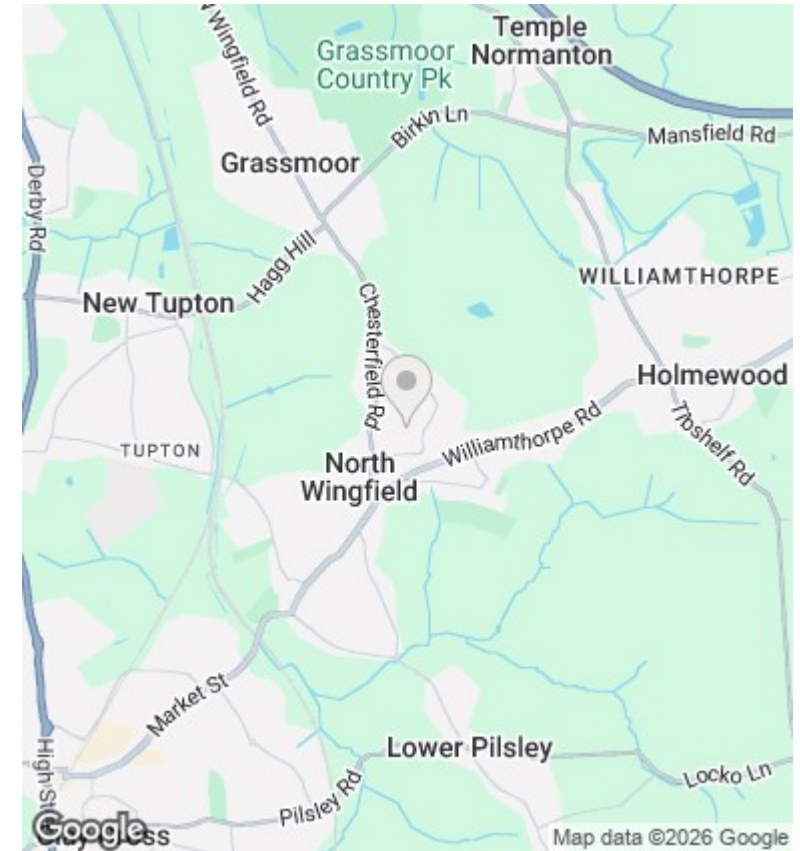


First Floor

Approx. 26.3 sq. metres (282.6 sq. feet)



Total area: approx. 52.5 sq. metres (565.2 sq. feet)



Directions

Viewings

Viewings by arrangement only. Call 01246 275 559 to make an appointment.

Council Tax Band

A

EPC Rating:

C

Energy Efficiency Rating		Current	Potential
Very energy efficient - lower running costs			
(92 plus)	A		94
(81-91)	B		
(69-80)	C	77	
(55-68)	D		
(39-54)	E		
(21-38)	F		
(1-20)	G		
Not energy efficient - higher running costs			
England & Wales		EU Directive 2002/91/EC	